

THIS MAP IS FOR THE PURPOSE
OF AS VALUATION TAXATION ONLY.

S.1/2, N.E.1/4 Sec.20, T.1N.,R.8E., S.B.B.&M.

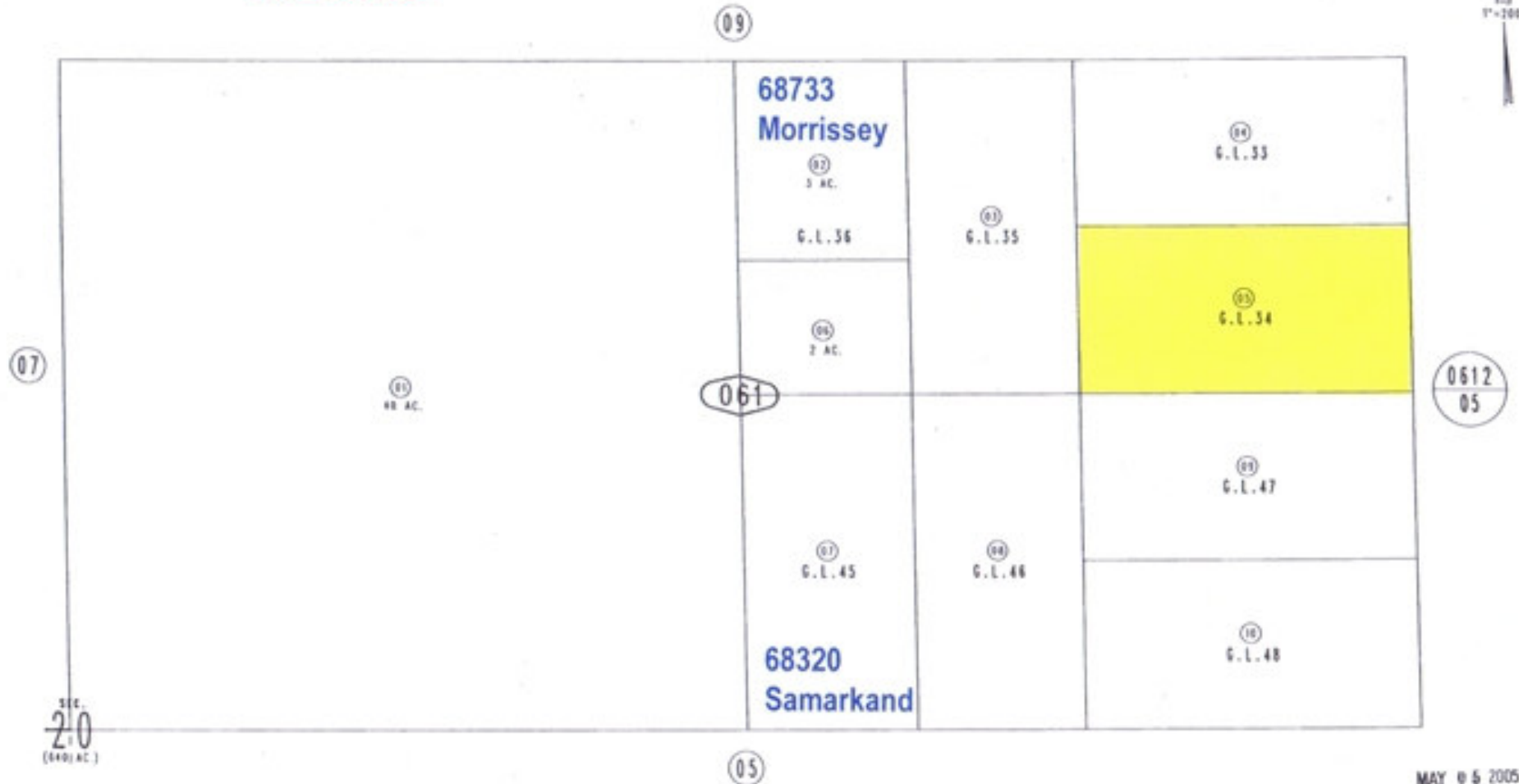
City of Twentynine Palms 0609-06
Tax Rate Area
19001



Morrissey Mountain
5 Acres
0609-061-05

Twentynine Palms 92277

1"=200'



SEC.
20
(640 AC.)

DesertLand.com
760-327-4842

Assessor's Map
Book 0609 Page 06
San Bernardino County

MAY 05 2005

REVISED