

THIS MAP IS FOR THE PURPOSE OF AD VALOREM TAXATION ONLY.

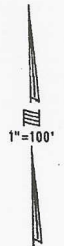
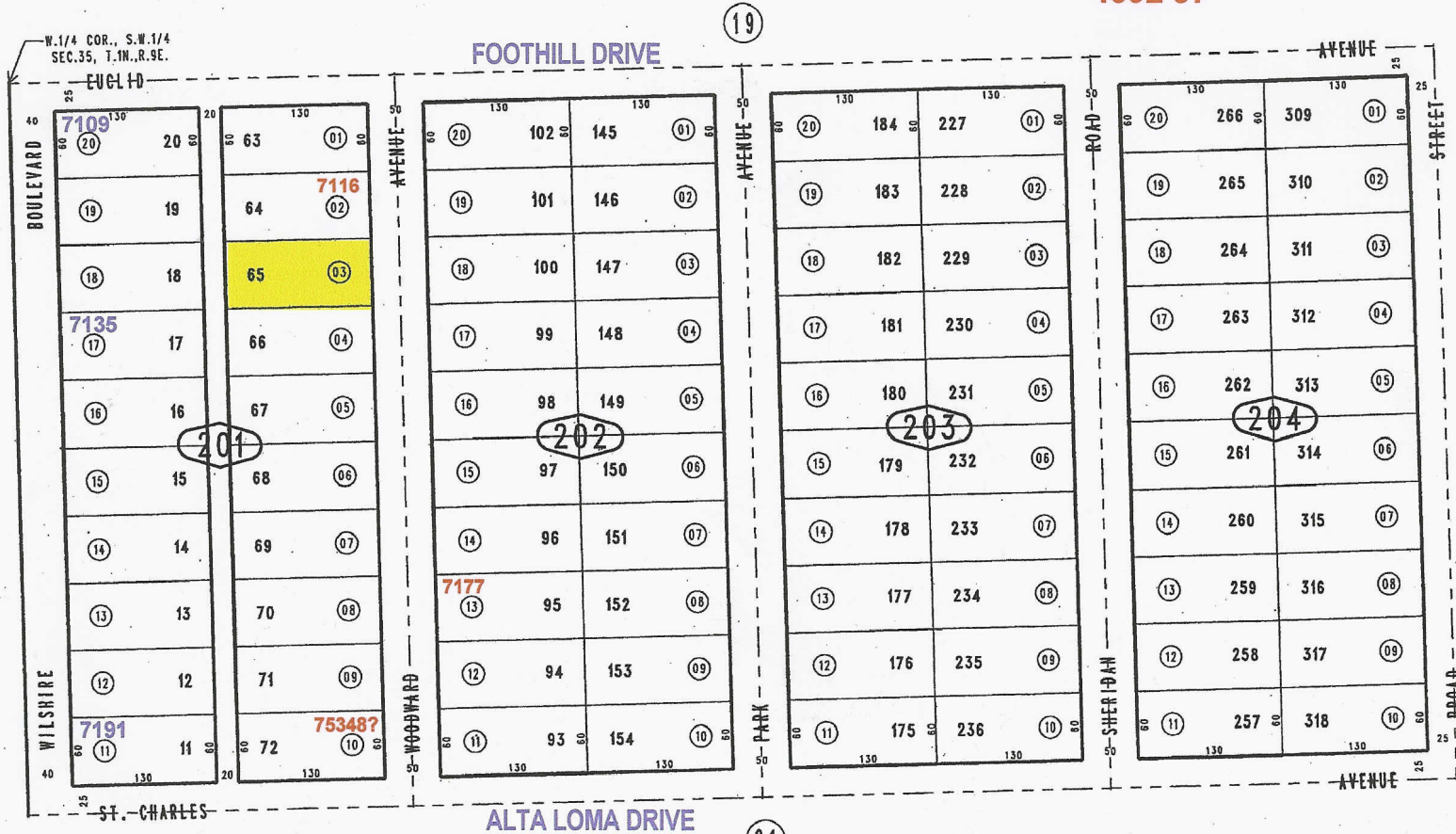


Ptn. Tract No. 2506, M.B. 36/5

Kelly Desselle  
Realty 2000  
760-770-6675

City of Twentynine Palms 0624-20  
Tax Rate Area  
19001

Thomas Guide  
4892 J7



**WOODWARD AVENUE**  
City of Twentynine Palms  
0624-201-03  
March 2005  
**.18 Residential Lot**

JUN 07 2005

Assessor's Map  
Book 0624 Page 20  
San Bernardino County

REVISED