

Pln. Tract No. 2506, M.B. 36/5

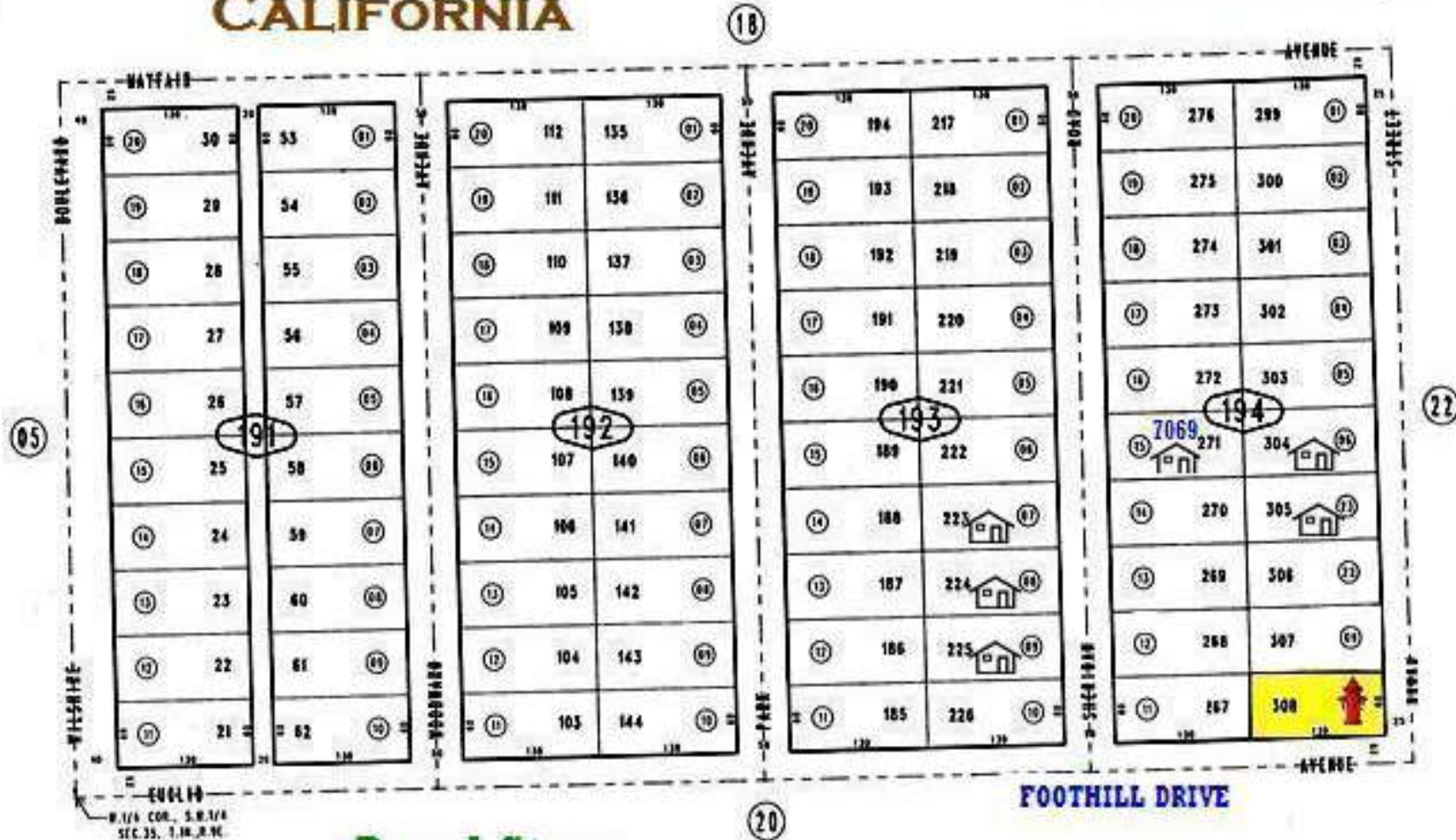
City of Twentynine Palms 0624-19
Tax Rate Area
19001

THIS MAP IS FOR THE PURPOSE
OF AD VALOREM TAXATION ONLY.



TWENTYNINE PALMS CALIFORNIA

Thomas Guide: 4892 J-7



Broad Street
.19 Residential Lot
0624-194-10

DesertLand.com
760-327-4842

PARCEL MAP
Assessor's Map
Book 0624 Page 19
San Bernardino County



March 2005

JUN 07 2005

REVISED