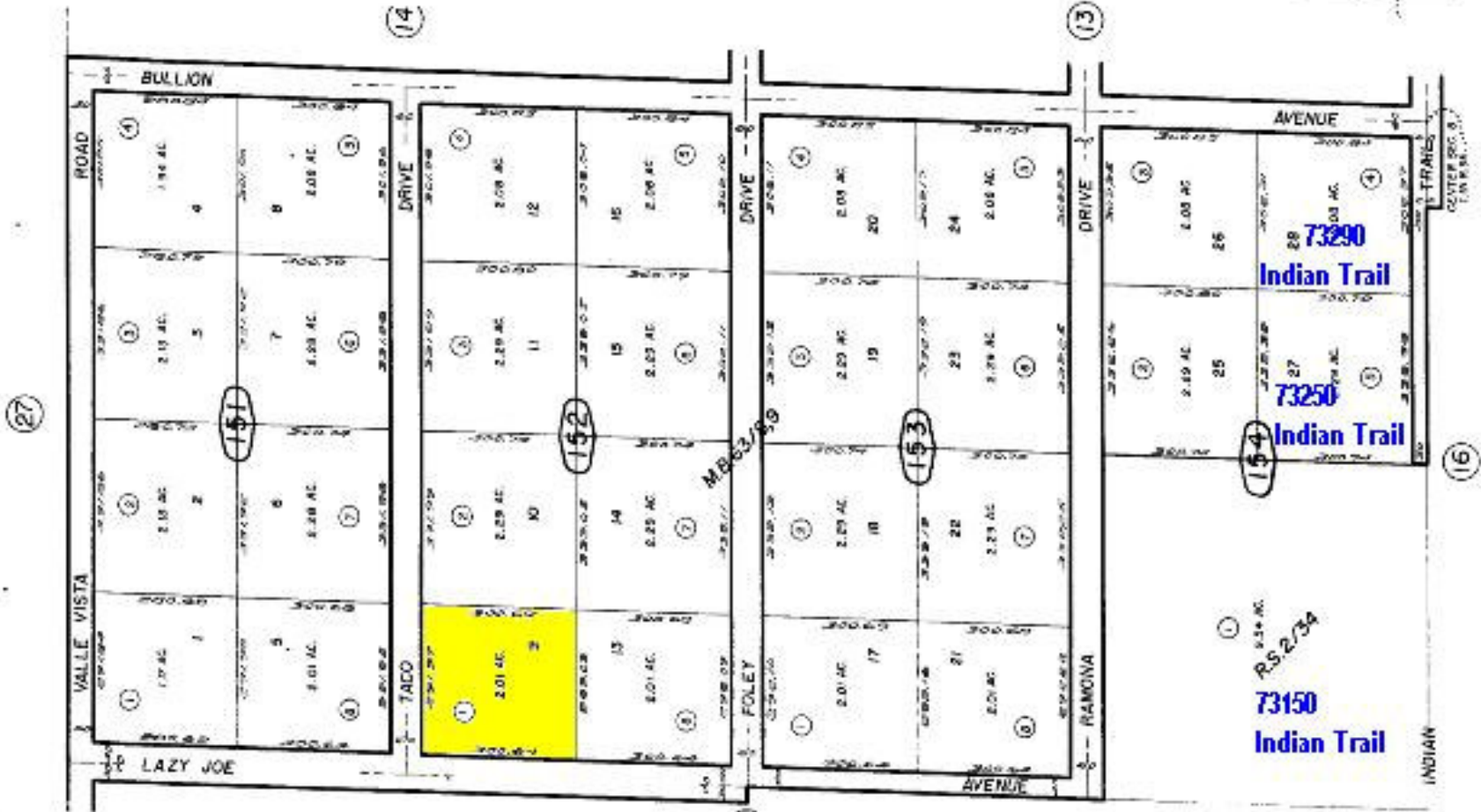
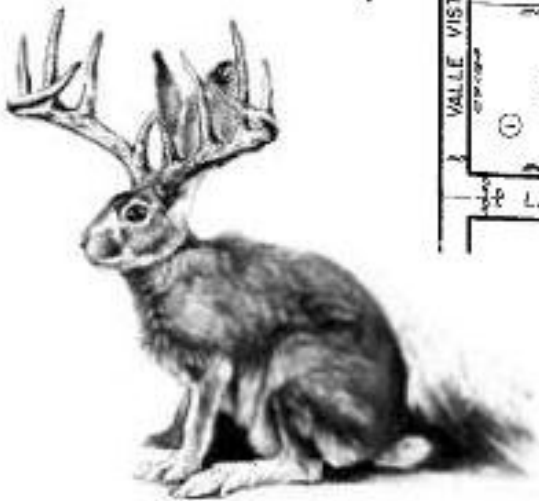


# TWENTYNINE PALMS 92277

Por. E. 1/2, NW. 1/4 Sec. 8, T.1N.R.9E., S.B.B.8M., R.S. 2/34  
 Por. Twentynine Palms Ranchos, Tract No. 5146, M.B.63/8,9

City of Twentynine Palms 620-15  
 Tax Rate Area  
 19001

APN: 0620-152-01



Lazy Joe Avenue  
 2.01 Acres

Note-Assessors Blk. B Lot  
 Numbers Shown in Circles

Assessors Map  
 Book 520, Page 15  
 San Bernardino County

REVISED  
 2/15/07  
 11/14/07  
 02/21/08 PR