

THIS MAP IS FOR THE PURPOSE OF AD VALOREM TAXATION ONLY.

N.1/2, N.E.1/4, Sec.21, T.1N.,R.8E., S.B.B.&M.
R.S. 4/97 & 5/20

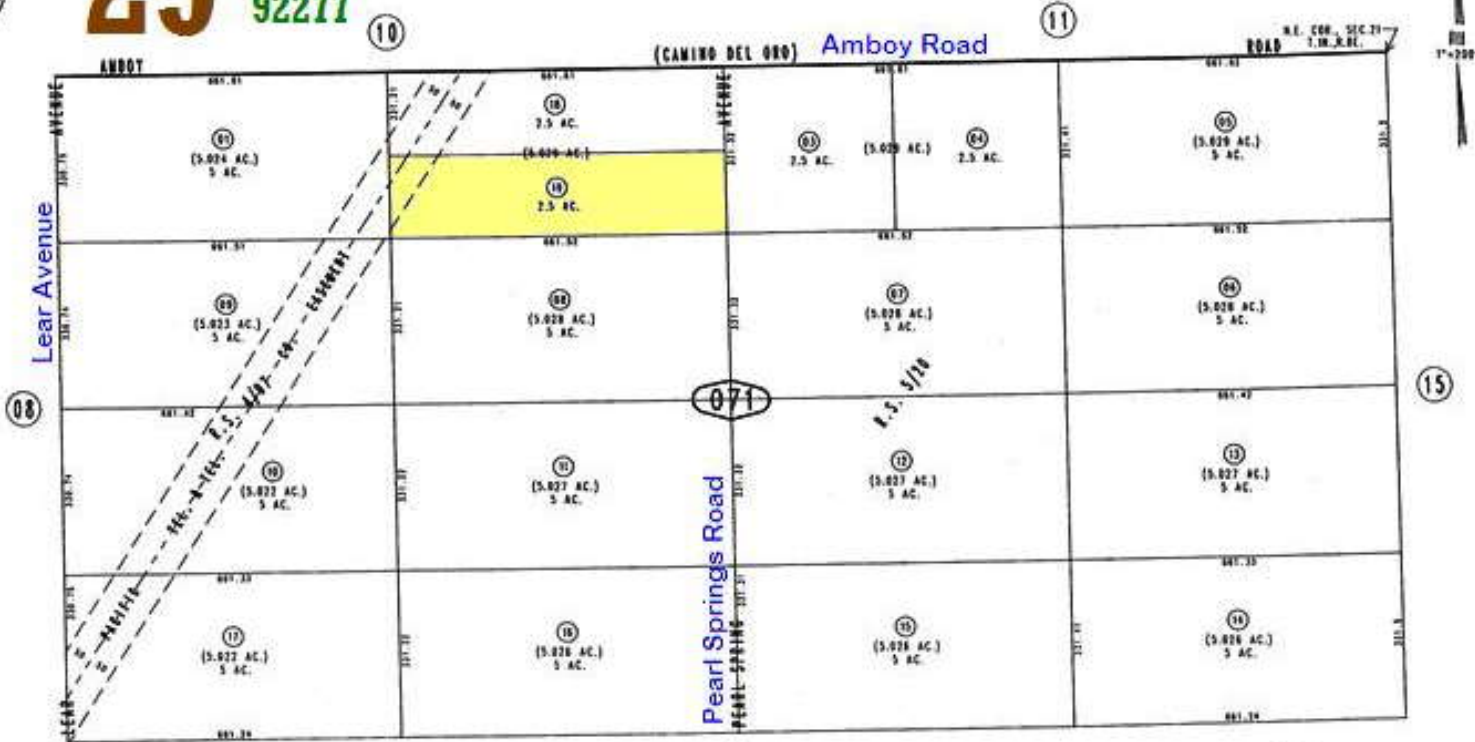
City of Twentynine Palms
Tax Rate Area
19001

0612 - 07



29 Palms

92277



PEARL SPRINGS AVENUE

0612-071-19

2.5 Acres

February 2005

DesertLand.com

760-327-4842



Assessor's Map
Book 0612 Page 07
San Bernardino County

MAY 05 2005

REVISED