

THIS MAP IS FOR THE PURPOSE
OF AN ALIENEN CARRION ONLY

S.1/2 Fractional Sec.2, T.1S.,R.9E., S.B.B.&M.

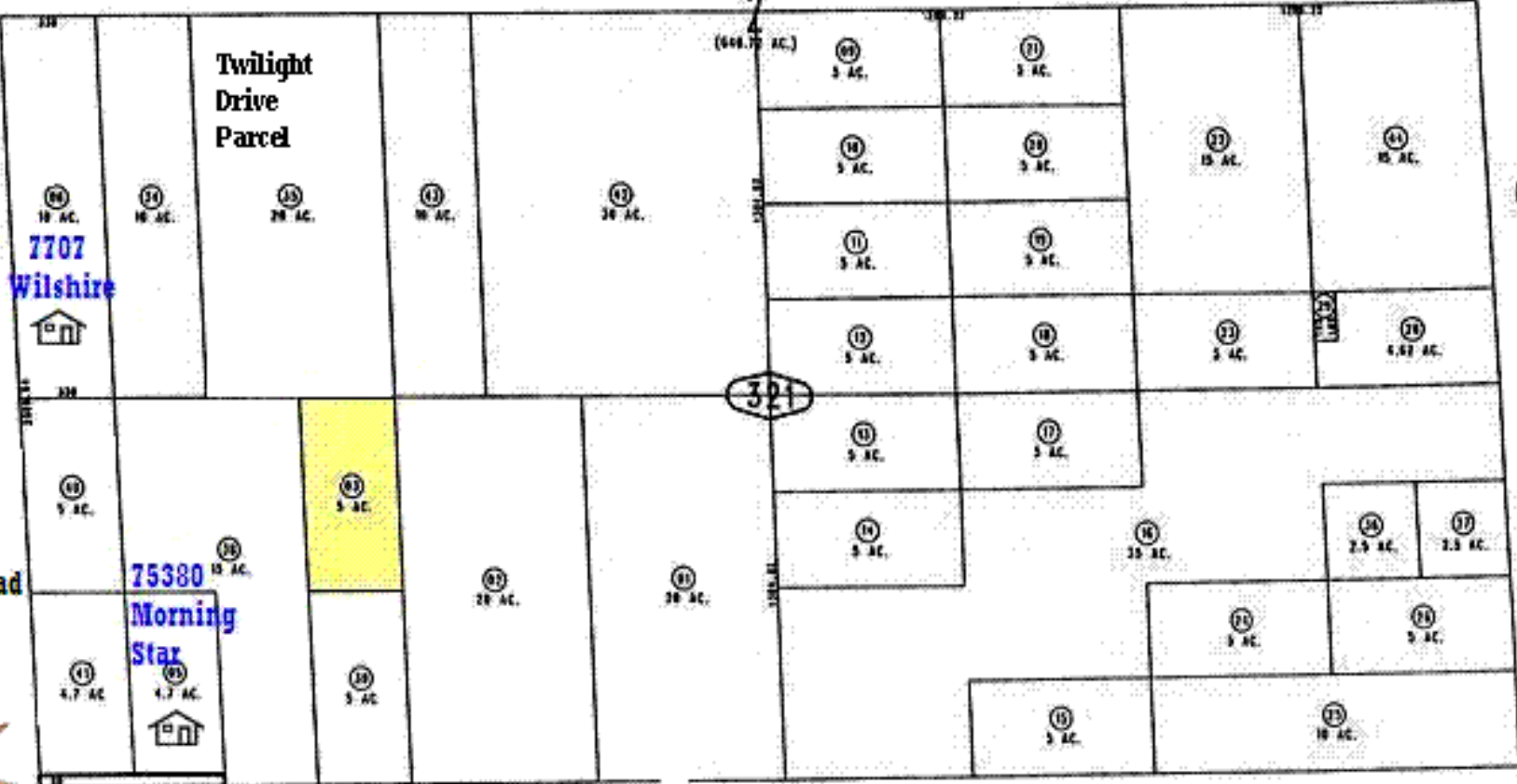
City of Twentynine Palms 0591-32
Tax Rate Area
19001

Thomas Guide: 4962 I-2
PARCEL MAP

MORNING STAR ROAD
591-321-03
5 ACRE PARCEL



Wilshire Avenue



30

31

7707
Wilshire

0590
15

Morning Star Road

75380
Morning
Star



DesertLand.com
760-327-4842

TWENTYNINE PALMS, CA 92277

JUL - 07 2005

REVISED

Assessor's Map
Book 0591 Page 32
San Bernardino County

April 2005