

THIS MAP IS FOR THE PURPOSE OF AN EQUALIZED TAXATION ONLY.

S.1/2, N.W.1/4, N.W.1/4, Fractional Sec.11, T.1S.,R.9E., S.B.B.&M. City of Twentynine Palms 0591 - 23
Tax Rate Area 19001

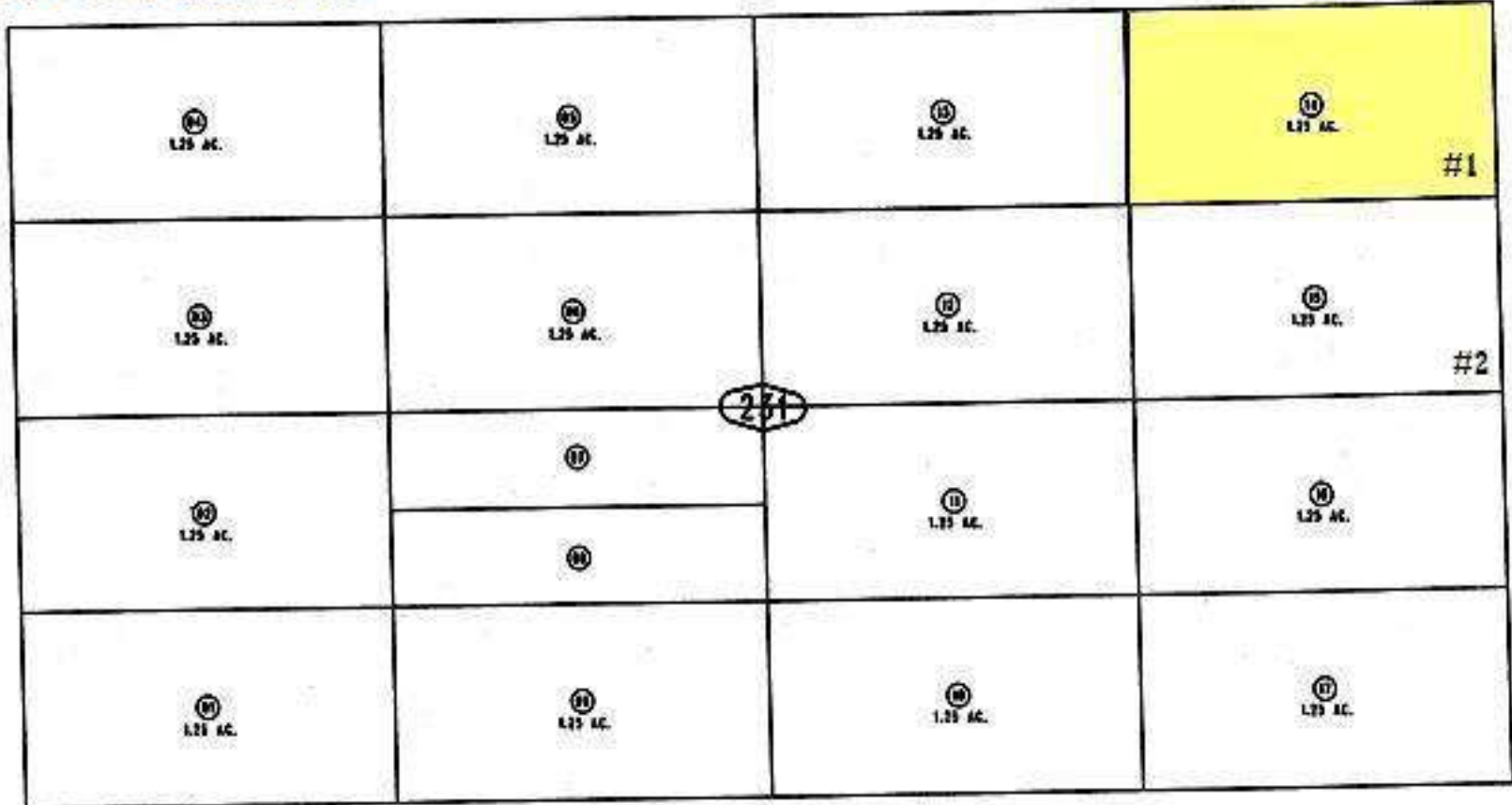


SOUTH OF MORNING STAR #1

0591-231-14

1.25 ACRES

DesertLand.com
760-327-4842



0590
14

24

231

22

20

TWENTYNINE PALMS

CALIFORNIA 92277

Thomas Guide: 4962 I-2

JUL 07 2005

April 2005



Assessor's Map
Book 0591 Page 23
San Bernardino County

REVISED