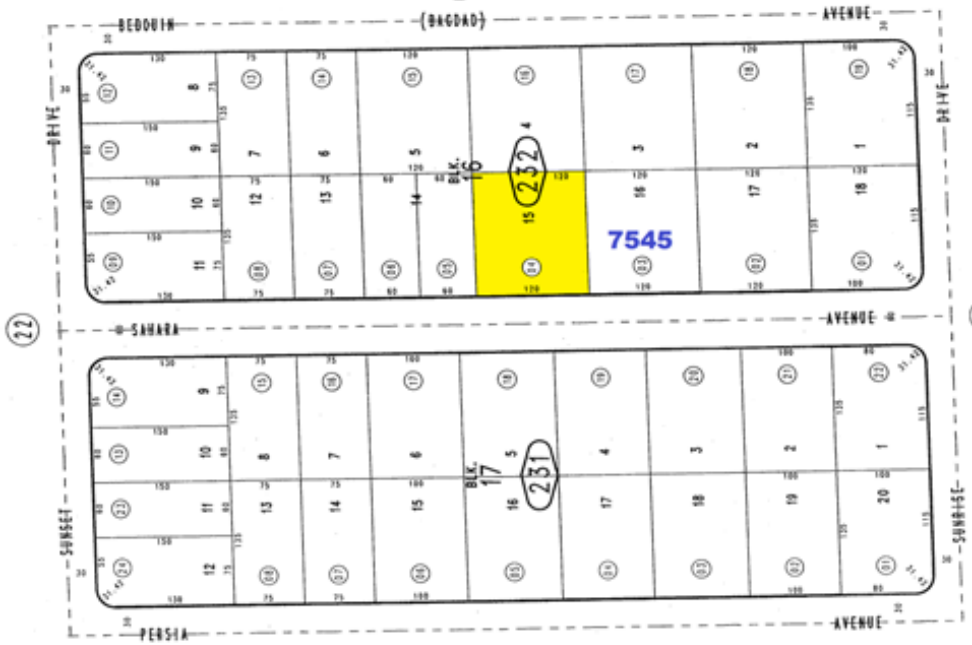
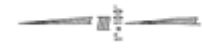


THIS MAP IS FOR THE PURPOSE OF AD VALOREM TAXATION ONLY.

Ptn. Twentynine Palms 'Desert Home' Subdivision, Unit No. 1 City of Twentynine Palms 0590-23  
Tract No. 2504, M.B. 36/2-3 Tax Rate Area 19001



# 0590-232-04



## Sahara Avenue

### .37 Acres

**DesertLand.com**  
760-327-4842

Assessor's Map  
Book 0590 Page 23  
San Bernardino County

JUN 07 2005

REVISED

February 2005