

THIS MAP IS FOR THE PURPOSE OF AD VALOREM TAXATION ONLY.

N.1/2, N.E.1/4, Sec.21, T.1N.,R.8E., S.B.B.&M.  
R.S. 4/97 & 5/20

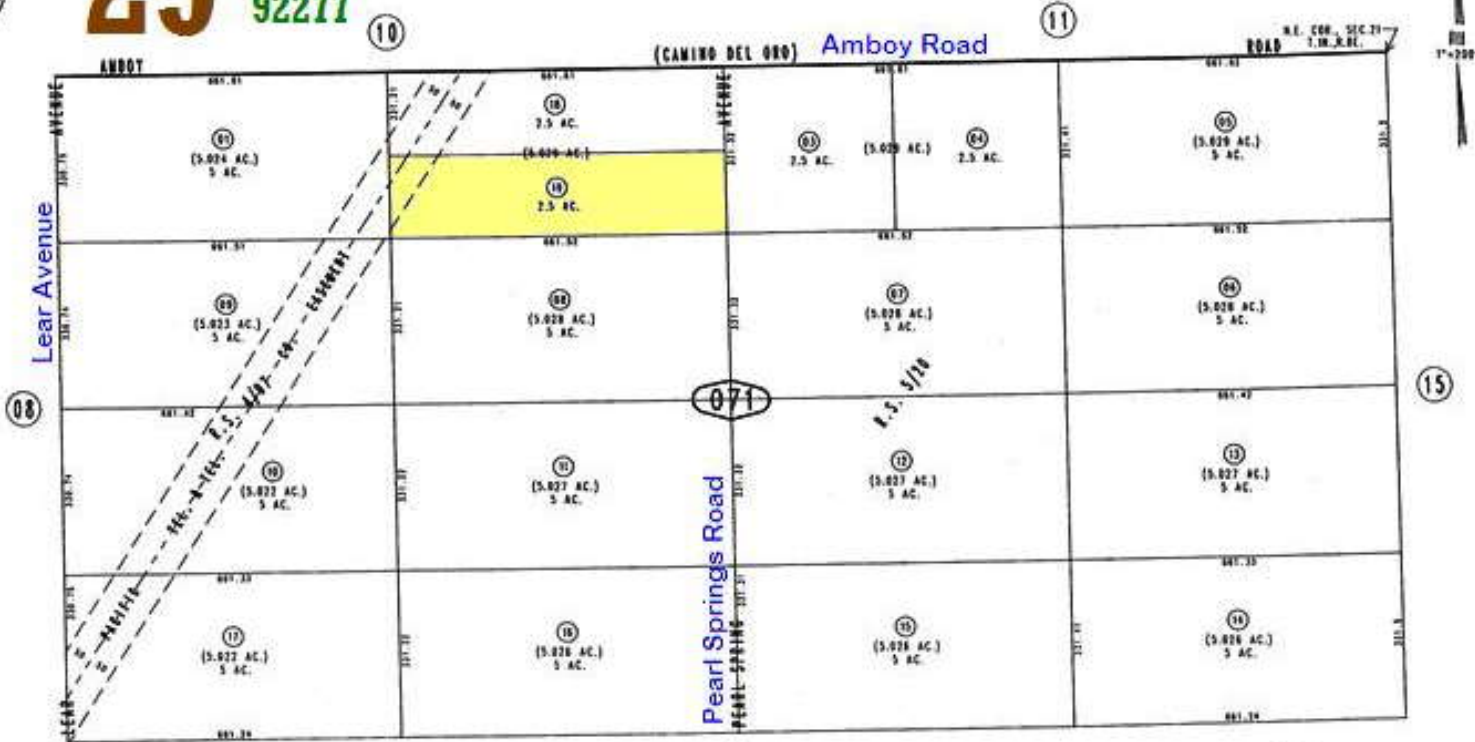
City of Twentynine Palms  
Tax Rate Area  
19001

0612 - 07



# 29 Palms

92277



## PEARL SPRINGS AVENUE

0612-071-19

2.5 Acres

February 2005

**DesertLand.com**

760-327-4842



Assessor's Map  
Book 0612 Page 07  
San Bernardino County

MAY 05 2005

REVISED