

THIS MAP IS FOR THE PURPOSE  
OF AD VALOREM TAXATION ONLY.

Ptn. S.1/2 S.E.1/4, Sec.24, T.2N.,R.6E., S.B.B.&M.  
Ptn. Tract No. 5700, M.B. 71/40-41

Morongo Unified  
Tax Rate Area  
94071

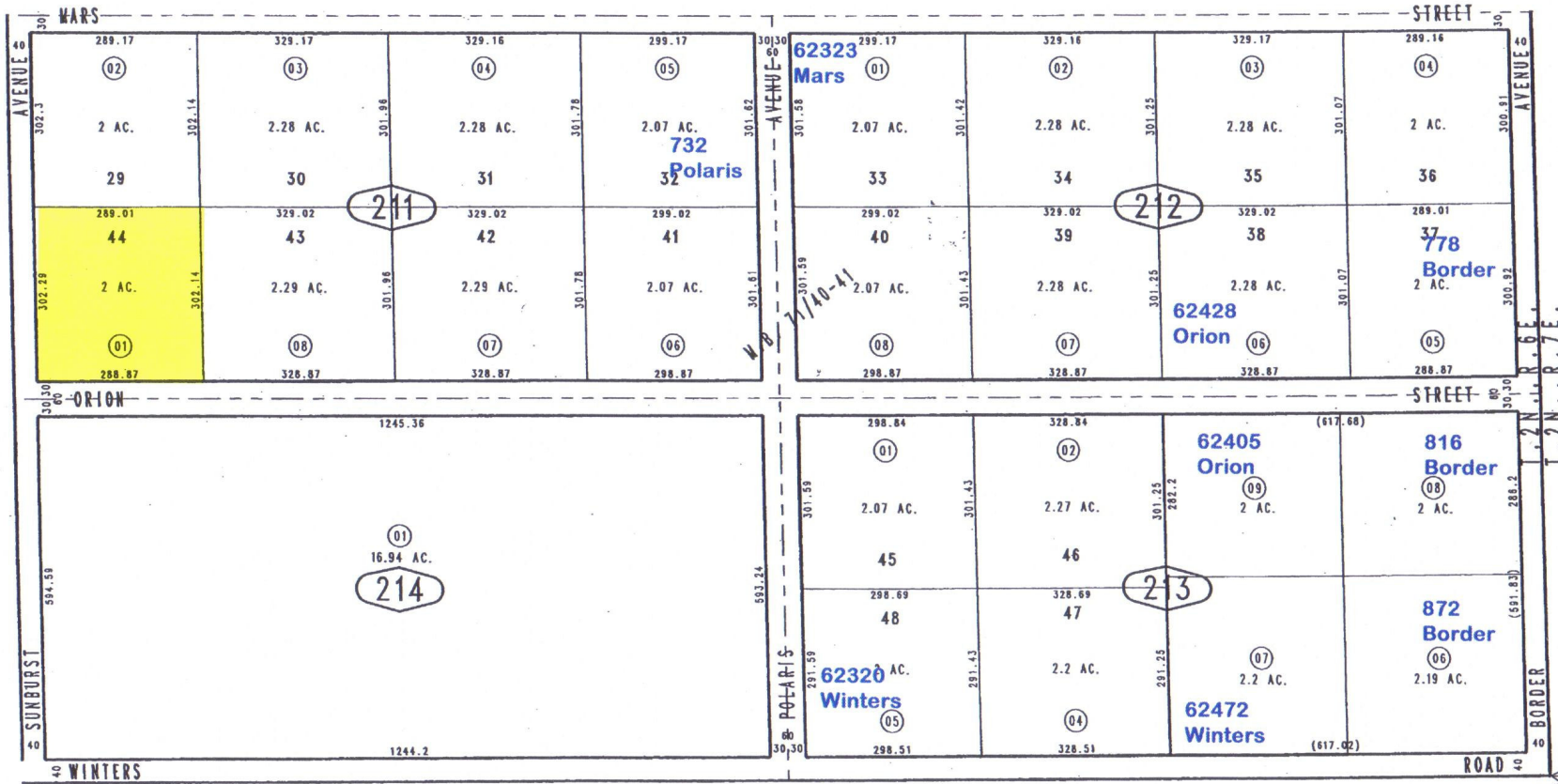
0631-21



**0631-211-01**  
**Sunburst at Orion**  
**Joshua Tree, 92252**

22

1"=200'



20

0632  
30

15

S.E. COR. SEC.24  
T.2N.,R.6E.

JUN 07 2005

**Kelly Desselle**  
**Realty 2000**  
**760-779-6675**

Assessor's Map  
Book 0631 Page 21  
San Bernardino County

REVISED

March 2005